

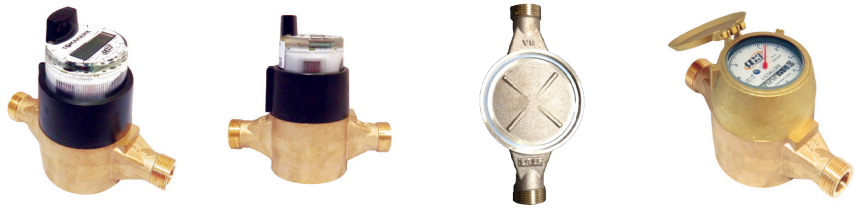
Perpetual® Low Lead Meters

Positive Displacement Cold Water Meters

5/8" (DN 15mm), 3/4" (DN 20mm), 1" (DN 25mm)



Specifications



Applications - For use in measurement of potable cold water in residential, commercial and industrial services where flow is in one direction only.

General- All Perpetual® positive displacement cold water meters (5/8" - 1") conform to American Water Works Association C700 latest revision.

Measuring Chambers - Measuring chambers are made of suitable engineering plastics to meet AWWA C700 standards. The piston has approximately the same specific gravity as water. All of the spindles are stainless steel. The chamber is supported by silicone rubber mounts.

Lead Free Main Case - Main cases are made of Bismuth BiAlloy CDA89836 or EnviroBrass™ II C89520 and are in compliance with NSF / ANSI 61 standards and the Safe Drinking Water Act (NSF 372). The serial number is permanently marked on the body, along with the size, direction of flow and manufacturer (RG3). The retaining ring is made of stainless steel.

Main Case	Lead Free Bronze
Measuring Unit	Thermoplastic
O-Ring	Nitrile Rubber
Magnet	Ceramic Ferrite

Strainer	Thermoplastic
Register Lens	Tempered Glass
Register Housing & Lid	Bronze or Polymer
Gearing Wheels	Thermoplastic

Installation - The meter must be installed in a clean pipeline, free from any foreign materials. The meter should be installed with the direction of flow as indicated by the arrow cast in the meter case. The meter may be installed in horizontal or inclined lines.

Strainers - All meters have a strainer made of a polypropylene plastic. Strainers are located near the inlet port in the main case just before the measuring chamber. The strainer screens are rigid, snug fitting and have an effective straining area of at least double that of the main case inlet. All of the strainers are easily removable and replaceable.

Bottom Plate - All meters have a bottom plate that provides 360 degrees of uniform compression loading on the chamber. The bottom plates are held in place by a stainless steel retaining ring.

O-Ring - All meters are sealed with a high pressure O-ring composed of Nitrile Buna.



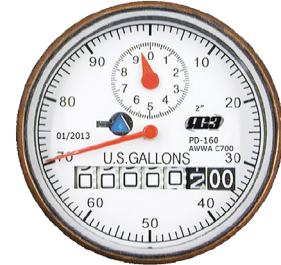
2912 South Access Rd.
Longview, TX 75602
PH: 903-753-3456
Fax: 903-753-5678
RG3METER.COM



Direct Read Sealed Registers - These registers are the straight read, magnetic drive, odometer type with a sweep hand and leak detector. Registers are hermetically sealed to prevent fogging. Registers are roll sealed and dry with a 360° test view. All direct reading register cups are made of copper to prevent corrosion and covered with a high-strength, impact-resistant glass lens to prevent breakage. The register housings and lids are made of high strength polymer or copper alloy. All registers are secured to the main case by means of a tamper-proof Torx screw to allow for in line service replacement.

Registers include:

- Company name
- Month and year of manufacture
- Center sweep hand
- Large, easy to read numbers
- Size of meter
- Unit of Measure (Example U.S. Gallons, Cubic Feet, or m3)
- Low flow / leak indicator



Registers include an odometer, which will give the total amount of water flow. One sweep of the hand will be equal to:

- 5/8" - 1" meters 10 gallons/1 cu ft
- 1 1/2" - 2" meters 100 gallons/10 cu ft

Register Options -

- Direct Read - Bronze or Engineered Plastic
- Tesla 4 MTR - AMR / AMI - RF Meter Transceiver Register
- Tomahawk - AMR/AMI - Absolute Encoder Register

Magnetic Drive - Meters use high strength magnets to provide positive, reliable and dependable register coupling.

Characteristics- Meets or exceeds latest revision of AWWA C700 Dimensional Standards. Rated at 120°F.

All Bronze Construction	Optional Check Valve	Direct Read & AMR/AMI Register Options	American Made	Large Numbers for Easy Reading	Excellent Start Up & Low Flow Rate	Built-in Strainer
-------------------------	----------------------	--	---------------	--------------------------------	------------------------------------	-------------------

Tamper-proof Features - Registers shall contain a locking device to prevent theft of water usage. Removing the register requires a special tool.

Maintenance -The measuring chamber assembly can be removed in order to be repaired or replaced.

Warranty - Standard 10 year new meter accuracy warranty and 25 year main case warranty.

* Refer to full warranty for detailed warranty guidelines and standards.



2912 South Access Rd.
 Longview, TX 75602
 PH: 903-753-3456
 Fax: 903-753-5678
 RG3METER.COM



Perpetual® Low Lead Meters

Positive Displacement Cold Water Meters

5/8" (DN 15mm), 3/4" (DN 20mm), 1" (DN 25mm)



Meter Transceiver Register
(MTR) - AMR/AMI



Meter Transceiver Register
(MTR) - AMR/AMI



Perpetual® PD - Bottom



Direct Read

Model		PPD 05	PPD 07	PPD 08S	PPD 08L	PPD 10
Size		5/8 x 1/2"	5/8x3/4"	3/4"	3/4"	1"
Start Flow	USGPM	1/32 (.03)	1/32 (.03)	1/16 (.0625)	1/16 (.0625)	1/8 (.125)
Low Flow	USGPM	3/16 (.18)	3/16 (.18)	1/4 (.25)	1/4 (.25)	1/4 (.25)
Continuous	USGPM	15	15	20	20	25
High Flow	USGPM	20	20	30	30	50
Extreme High Flow (Intermittent)	USGPM	28	28	35	35	65
Max. Pressure Plastic Bottom	P.S.I.	150	150	150	150	150
Max. Pressure Brass Bottom	P.S.I.	300	300	300	300	300
Max. Pressure Cast Iron Bottom	P.S.I.	250	250	250	250	250
Max. Temp.	Deg. F	120°	120°	120°	120°	120°
Length	Inches	7- 1/2"	7- 1/2"	7- 1/2"	9"	10- 3/4"
Height	inches	4- 13/16"	4- 13/16"	5- 1/2"	5- 1/2"	6- 7/8"
Weight	Pounds	3.4LBS	3.4LBS	6.4LBS	6.4LBS	11.2LBS
Ends		Threaded	Threaded	Threaded	Threaded	Threaded

* Due to continuous research and product enhancement, RG3 Meter Company reserves the right the change product or system specifications without notice, except to the extent an outstanding contractual obligation exists.



2912 South Access Rd.
Longview, TX 75602
PH: 903-753-3456
Fax: 903-753-5678
RG3METER.COM

