

Compound Meters

2", 3", 4", 6", 8", 10"



Specifications

Applications - For use in measurement of potable cold water in residential, commercial and industrial services where flow is in one direction only.

Lead Free Main Case - The meter main case shall be cast from NSF/ANSI 61, certified lead free alloy. Meters shall also meet the changes to the Safe Drinking Water Act (NSF 372) that become effective January 4, 2014. The serial number is permanently marked on the body, along with the size, direction of flow and manufacturer (RG3).

2" - 10" Meters main casing are epoxy coated ductile iron. The serial number is permanently marked on the body along with the size, direction of flow and manufacturer (RG3).

The main casing of the by-pass meter is made of copper alloy that meets the latest AWWA C702 standards. Meters shall also meet the changes to the Safe Drinking Water Act (NSF 372) that become effective January 4, 2014.

Performance - The CM Meter combines the advantages of the turbine meter and the Positive Displacement meter to give a highly efficient and accurate meter over extreme flow ranges. The measuring element is unsurpassed in its durability and long term accuracy. The CM Meter complies with AWWA Standard C702. Bolts shall be made of stainless steel to prevent corrosion. Bottom plates are available in suitable engineering plastic, copper alloy or cast iron.

Measuring Element - The measuring element consists of the measuring element insert, rotator, inlet straightening vanes and the calibration assembly. All spindles are stainless steel.

Test Plug - A test plug optional.

Construction - The CM construction consists of four basic components: Main case, measuring element, register housing and permanently sealed register. The main case is epoxy coated cast iron, compact and easy to handle. The measuring element consists of a rotor, straightening vanes, accuracy regulator, spindles, gears and drive coupling assembly. Through that magnetic coupling, rotor rotation is transmitted to a follower magnetic coupling which transmits rotation to the register gearing. The register housing is cast bronze for durability.

Installation - Turbine Meters can be installed in virtually any position as long as the totalizer is not placed upside down. Cavitation can present a significant error curve, so RG3 Meter Company recommends 10 pipe diameters of straight pipe upstream of the meter and 5 pipe diameters of straight pipe downstream. It is highly recommended that a Z-plate strainer be used to protect the turbine and help reduce the effects of turbulence. Installing a separate flow-straightening device upstream ensures the highest possible accuracy.

The meter must be installed in a clean pipeline, free from any foreign materials. The meter shall be installed with the direction of flow as indicated by the arrow cast in the meter case. The meter may be installed in horizontal, vertical or inclined lines.

Maintenance - The CM is designed to provide longterm service with minimal maintenance. When maintenance is required, the meter can remain in place and the measuring element with integral straightening vanes can be removed, repaired or replaced. Pre-Tested and calibrated measuring elements are available for exchange or purchase.



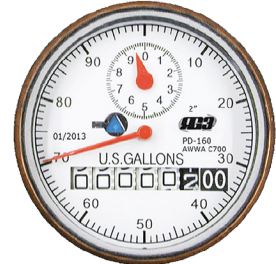
2912 South Access Rd.
Longview, TX 75602
PH: 903-753-3456 Fax: 903-753-5678
www.rg3meter.com



Direct Read Sealed Registers - The registers are a straight read odometer type with a sweep hand and leak detector. Registers are hermetically sealed to prevent fogging. Registers are roll sealed and dry with a 360 ° test view. All direct reading register cups are made of copper to prevent corrosion and covered with a high-strength, impact-resistant glass lens to prevent breakage. Registers are vacuum sealed. Register housing and lids are made of high-strength polymer or copper alloy. Registers are secured to the main case by means of a plastic tamper-proof seal to allow for in-line service replacement.

Register include the following:

- Company name
- Month and year of manufacture
- Center sweep hand
- Large, easy to read numbers
- Size of meter
- Type of reading
- (Example U.S. Gallons, Cubic Feet, or m3)
- Diamond shaped indicator detecting low flow or leaks



Register Options

- Direct Read - Bronze or Engineered Plastic
- Tesla 4 MTR - AMR / AMI - RF Meter Transceiver Register
- Tomahawk - AMR/AMI - Encoder Register

Magnetic Drive - Direct magnetic drive, through the use of high strength magnets, provide positive, reliable and dependable register coupling.

Characteristics- Meets or exceeds latest revision of AWWA C702 Dimensional Standards. Rated at 120°F.

Optional Test Port	Copper Can Sealed Register	Scratch Resistant Tempered Glass	Large Numbers for Easy Reading	Great Flow Rate	Easily Read in a Pit or Meter Box	Rated to 140°
--------------------	----------------------------	----------------------------------	--------------------------------	-----------------	-----------------------------------	---------------

Tamper-proof Features - Registers shall contain a locking device to prevent theft of water usage. Removing the register shall require a special tool that is available only to water utilities.

Maintenance -The measuring chamber assembly can be removed in order to be repaired or replaced.

Warranty - Standard 5 year new meter accuracy warranty and a 15 year standard warranty. * **Refer to full warranty for detailed warranty guidelines and standards.**



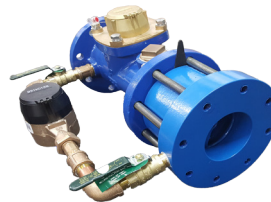
2912 South Access Rd.
 Longview, TX 75602
 PH: 903-753-3456 Fax: 903-753-5678
www.rg3meter.com





Compound Meters

2", 3", 4", 6", 8", 10"



Compound Meters		CM 20	CM 30	CM 40	CM 60	CM 80	CM 10
Size		2"	3"	4"	6"	8"	10"
Low Flow	USGPM	1/4	1/2	1/4	3/4	3/4	1 1/2
Normal Flow	USGPM	3-200	1-450	1-1000	3-2000	3-3500	5-7000
High Flow	USGPM	285	550	1250	2500	4500	7000
Continuous	USGPM	200	450	1000	2000	3500	5500
Max. Pressure	P.S.I.	160	160	150	150	150	150
Max. Temp.	Deg. F	140°F	120°F	120°F	120°F	120°F	120°F
Lay-length	Inches	15-1/4"	17"	20"	24"	Custom Built	Custom Built
Height	Inches	9 1/2	9 - 7/8"	10 3/4"	13 1/4"	14 1/4"	Custom Built
Flange Holes		4	4	8	8	8	12
		6 Hole (optional)					
Standard Bi-Pass Meter		5/8 x 3/4" Positive Displacement	5/8 x 3/4" Positive Displacement	5/8 x 3/4" Positive Displacement	1" Positive Displacement	1" Positive Displacement	2" Positive Displacement
Low Flow	USGPM	1/32	1/32	1/32	3/4	3/4	2
Normal	USGPM	1-20	1-20	1-20	3-50	3-50	8-160
High Flow	USGPM	20	20	20	50	50	160
Continuous	USGPM	15	15	15	25	25	80

* Due to continuous research and product enhancement, RG3 Meter Company reserves the right the change product or system specifications without notice, except to the extent an outstanding contractual obligation exists.

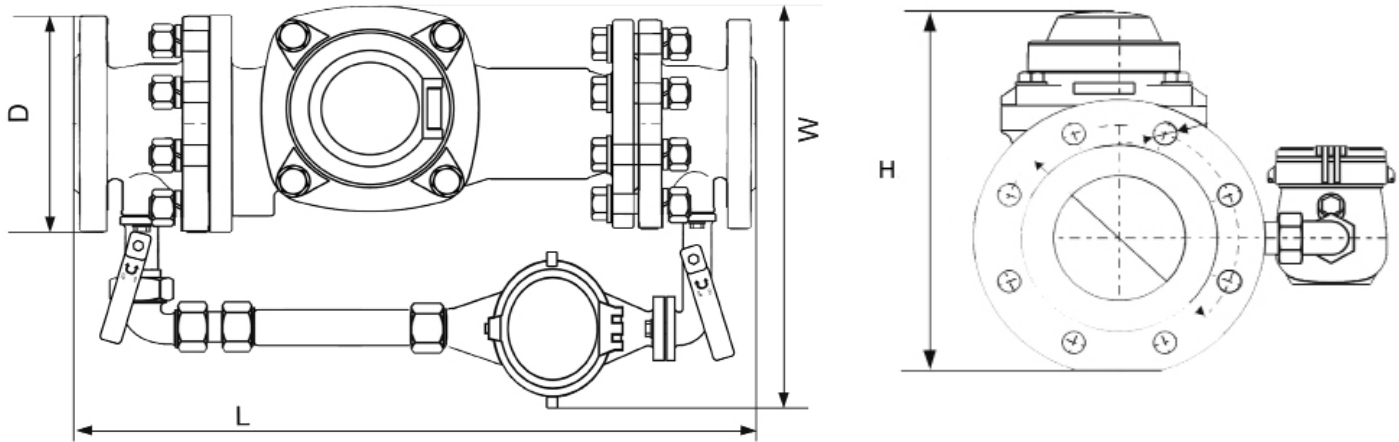


2912 South Access Rd.
 Longview, TX 75602
 PH: 903-753-3456 Fax: 903-753-5678
 www.rg3meter.com



Compound Meter Mechanical Dimensions

2", 3", 4", 6", 8", 10"



Dimensions		CM 20	CM 30	CM 40	CM 60	CM 80	CM 10
Pipe Size		2"	3"	4"	6"	8"	10"
Length	L	15-1/4"	17"	20"	24"	Custom Built	26 1/8"
Width	W	13"	15"	15-1/2"	19-1/2"	25-1/2"	29"
Height Mechanical Register	H	9-1/2"	9-7/8"	10-3/4"	13-1/4"	14-1/4"	21"
Height Tesla Register		12"	12-3/8"	13-1/2"	15-3/4"	16-3/4"	24 1/4"
Outside Diameter	D	6"	7-1/2"	9"	11"	13-1/2"	16"

* Due to continuous research and product enhancement, RG3 Meter Company reserves the right the change product or system specifications without notice, except to the extent an outstanding contractual obligation exists.



2912 South Access Rd.
 Longview, TX 75602
 PH: 903-753-3456 Fax: 903-753-5678
www.rg3meter.com

