

Positive Displacement Large Cold Water Meters

1 1/2" - 2"



Specifications

Applications - For use in measurement of potable cold water in residential, commercial and industrial services where flow is in one direction only.

General- All cold water meters (Positive Displacement 1 1/2" - 2") conform to the "Standard Specification for Cold Water Meters" C700 latest revision issued by AWWA or as otherwise stated.

Measuring Chambers - Measuring chambers as made of suitable engineering plastics to meet AWWA C700- Standards/ the piston has approximately the same specific gravity as water. All spindles as stainless steel.

Lead Free Main Case - Main casings are made of a copper alloy that meets the latest AWWA C700 Standards. The meter main case are cast from NSF/ANSI 61, certified lead free alloy. Meters also meet the changes to the Safe Drinking Water Act (NSF 372) that become effective January 4, 2014. The serial number is permanently marked on the body, along with the size, direction of flow and manufacturer (RG3). Bolts are made of stainless steel to prevent corrosion. Bottom plates are available in suitable engineering plastic, copper alloy or cast-iron.

Main Case	Lead Free Bronze
Measuring Unit	Thermoplastic
O-Ring	Nitrile Rubber
Magnet	Ceramic Ferrite
Strainer	Thermoplastic
Register Lens	Tempered Glass
Register Housing & Lid	Bronze or Polymer
Gearing Wheels	Thermoplastic
Bottom Plates	Bronze or Polymer

Installation - The meter must be installed in a clean pipeline, free from any foreign materials. The meter shall be installed with the direction of flow as indicated by the arrow cast in the meter case. The meter may be installed in horizontal or inclined lines.

Strainers - All meters have a strainer installed in the meter and made of a polypropylene plastic. Strainers are located near the inlet port in the main case just before the measuring chamber. Strainer screens are rigid, snug fitting, easy to remove and have an effective straining area of at least double that of the main-case inlet. All strainers are easily removable and replaceable.

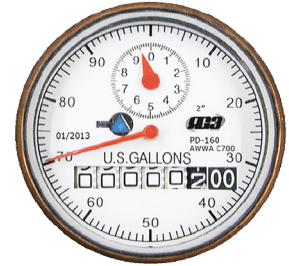
RG3 Meter Company
2912 S. Access Rd.
Longview TX , 75602
Ph:903-753-3456 Fax:903-753-5678
www.rg3meter.com



Direct Read Sealed Registers - The register is made of the straight reading sealed magnetic drive type and contain six (6) numeral wheels. Registers are hermetically sealed to prevent fogging. Registers are roll sealed and dry with a 360° test view. All direct reading register cups are made of copper to prevent corrosion and covered with a high-strength, impact-resistant glass lens to prevent breakage. Registers are vacuumed. Register boxes and lids are made of high-strength polymer or brass. All registers are secured to the main-case by means of a tamper-proof Torx screw to allow for in-line service replacement.

Register includes the following:

- Company name
- Month and year of manufacture
- Center sweep hand
- Large, easy to read numbers
- Size of meter
- Type of reading
(Example U.S. Gallons, Cubic Feet, or m3)
- Diamond shaped indicator detecting low
Flow or leaks



Register includes odometer, which will give the total amount of water. One sweep of the hand will be equal to:

1 1/2 thru 2" meters 100 gallons/10 cu ft

Register Options

- Direct Read - Bronze or Engineered Plastic
- Tesla 4 - AMR / AMI - RF Register
- Tomahawk - AMR/AMI - Encoder Register

Magnetic Drive - Meters use high strength magnets provides positive, reliable and dependable register coupling.

Characteristics- Meets or exceeds latest revision of AWWA C700 Dimensional Standards. Rated at 120°.

All Bronze Construction	Optional Check Valve	Direct Read & AMR/AMI Register Options	American Made	Large Numbers for Easy Reading	Excellent Start Up & Low Flow Rate	Built-in Strainer
-------------------------	----------------------	--	---------------	--------------------------------	------------------------------------	-------------------

Tamper-proof Features - Registers shall contain a locking device to prevent theft of water usage. Removing the register shall require a special tool that is available only to water utilities.

Maintenance -The measuring chamber assembly can be removed in order to be repaired or replaced.

Warranty - Standard 5 year new meter accuracy warranty and a 25 year standard warranty.

*** Refer to full warranty for detailed warranty guidelines and standards.**

RG3 Meter Company
 2912 S. Access Rd.
 Longview TX , 75602
 Ph:903-753-3456 Fax:903-753-5678
 www.rg3meter.com





Positive Displacement - Large Cold Water Meters

1 1/2" - 2"



Model		PD 15	PD 20
Size		1 1/2"	2"
Start Flow	USGPM	1/2	3/4
Low Flow	USGPM	1 1/2	2
Normal Flow	USGPM	5-100	8-160
High Flow	USGPM	100	160
Continuous	USGPM	50	80
Max Pressure Plastic Bottom	PSI	150	150
Max Pressure Bronze Bottom	PSI	150	150
Extreme High Flow (Intermittent)	USGPM	120	170
Max. Temp.	Deg. F	122°	122°
Length	Inches	13"	17"
Height	Inches	7 15/16"	8 1/2"
Weight	Pounds	25	34.6
Ends		Flanged	Flanged

*Due to continuous research and product enhancement, RG3 Meter Company reserves the right the change product or system specifications without notice, except to the extent an outstanding contractual obligation exists.

RG3 Meter Company
 2912 S. Access Rd.
 Longview TX , 75602
 Ph: 903-753-3456 Fax: 903-753-5678
 www.rg3meter.com

